

U8<sub>2</sub>



## Spare parts list

Edition 20110524



Valid for serial no. 917-xxx-xxxx

### Ordering no. Product

0460 820 880 Aristo<sup>®</sup> U8<sub>2</sub>

0460 820 881 Aristo<sup>®</sup> U8<sub>2</sub> Plus

Spare parts are to be ordered through the nearest ESAB agency. Kindly indicate type of unit, serial number, denominations and ordering numbers according to the spare parts list.

Maintenance and repair work should be performed by an experienced person, and electrical work only by a trained electrician. Use only recommended spare parts.

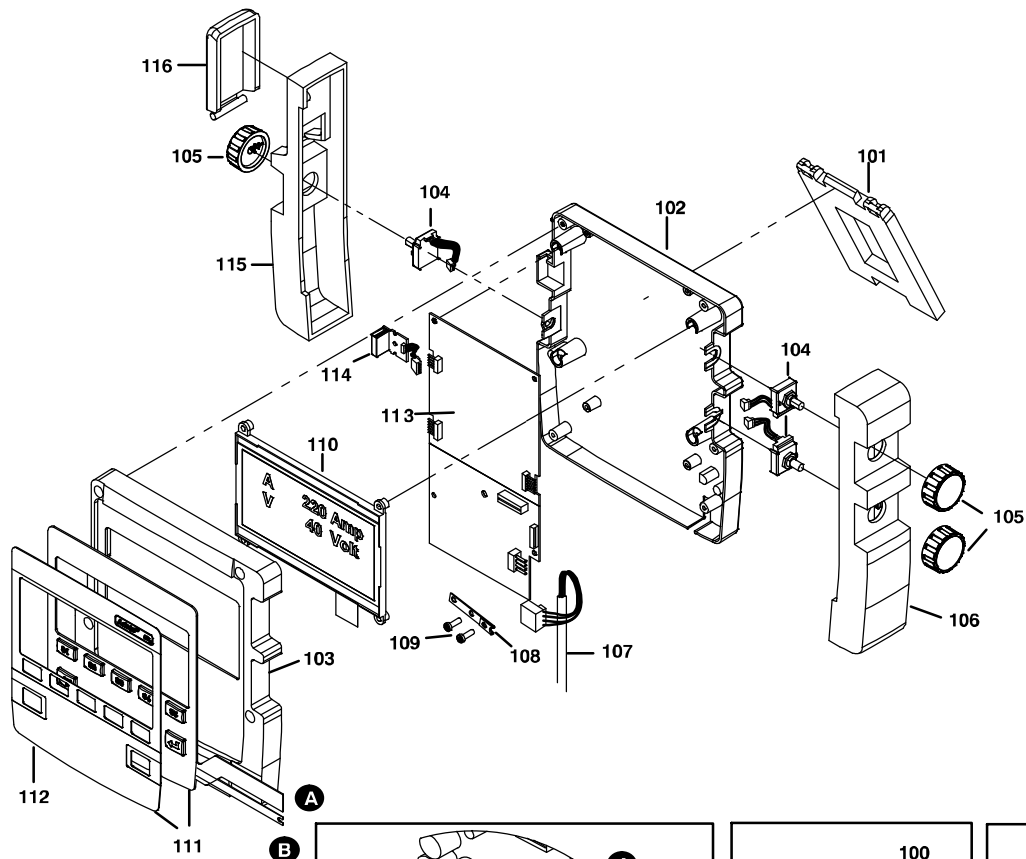
Rights reserved to alter specifications without notice.

C = component designation in the circuit diagram

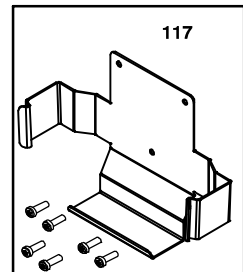
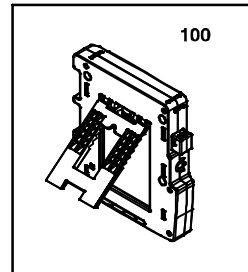
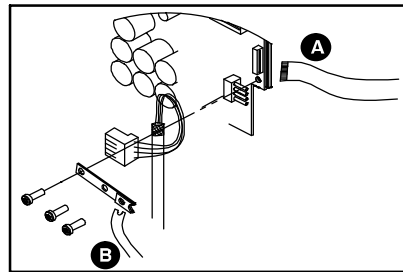
Item	Qty	Ordering no.	Denomination	Notes	C
100	1	0462 060 880	Plastic box	Includes item 101, 102, 103	
101	1		Support	Included in item 100	
102	1		Bottom cover	Included in item 100	
103	1		Top cover	Included in item 100	
104	3	0193 912 002	Encoder		SW1, SW2, SW3
105	3	0460 828 001	Knob		
106	1	0460 823 001	Side panel	Right	
107	1	0460 877 890	Control cable	L = 1.2	
108	1	0460 852 001	Shield tinplate		
109	16		Screw	Remform torx 4x12	
110	1	0193 949 003	Graphic display		1AP2
111	1	0460 822 880	Key pad, complete	Includes item 112	1AP3
112	1	0460 982 001	Key pad overlay	Included in item 111	
113	1		Weld data unit, PCB	See item 150 below	1AP1
114	1	0487 696 880	USB Printed circuit board		1AP4
115	1	0460 824 001	Side panel	Left	
116	1	0460 850 001	Cover for USB outlet	Rubber	
117	1	0460 964 001	Bracket		
117	6	0394 516 033	Spacing screw	M2x12	
	1	0194 313 001	Battery	CR 2450, incl in the weld data unit, PCB	

**SPARE PARTS SETS**

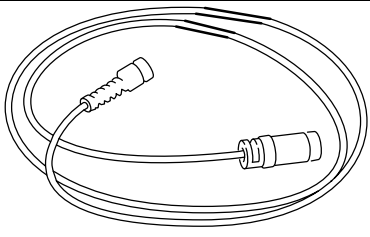
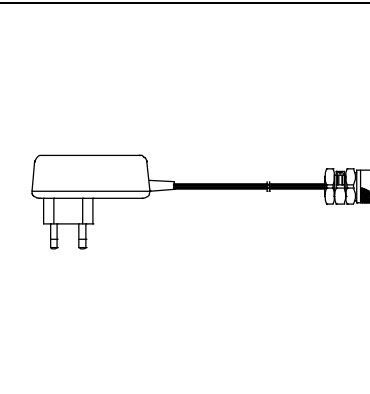

Item	Ordering no.	Denomination	Notes
150	0460 820 880	Aristo® U8 <sub>2</sub>	In exchange of broken weld data unit PCB 1AP1
150	0460 820 881	Aristo® U8 <sub>2</sub> Plus	In exchange of broken weld data unit PCB 1AP1



**A**  
**B**



Accessories

	<p><b>Extension cable (connectors included)</b> 7.5 m 12-poles ..... 0460 877 891</p>
	<p><b>Adapter set 230 V AC / 12 V DC, for control box ...</b> 0457 043 880 (for training with the control box disconnected from the machine).</p>
	<p><b>USB Memory stick Gb 2</b> 0462 062 001</p>







